

THE LONDON RESORT

The London Resort Development Consent Order

BC080001

Environmental Statement Volume 3: Figures

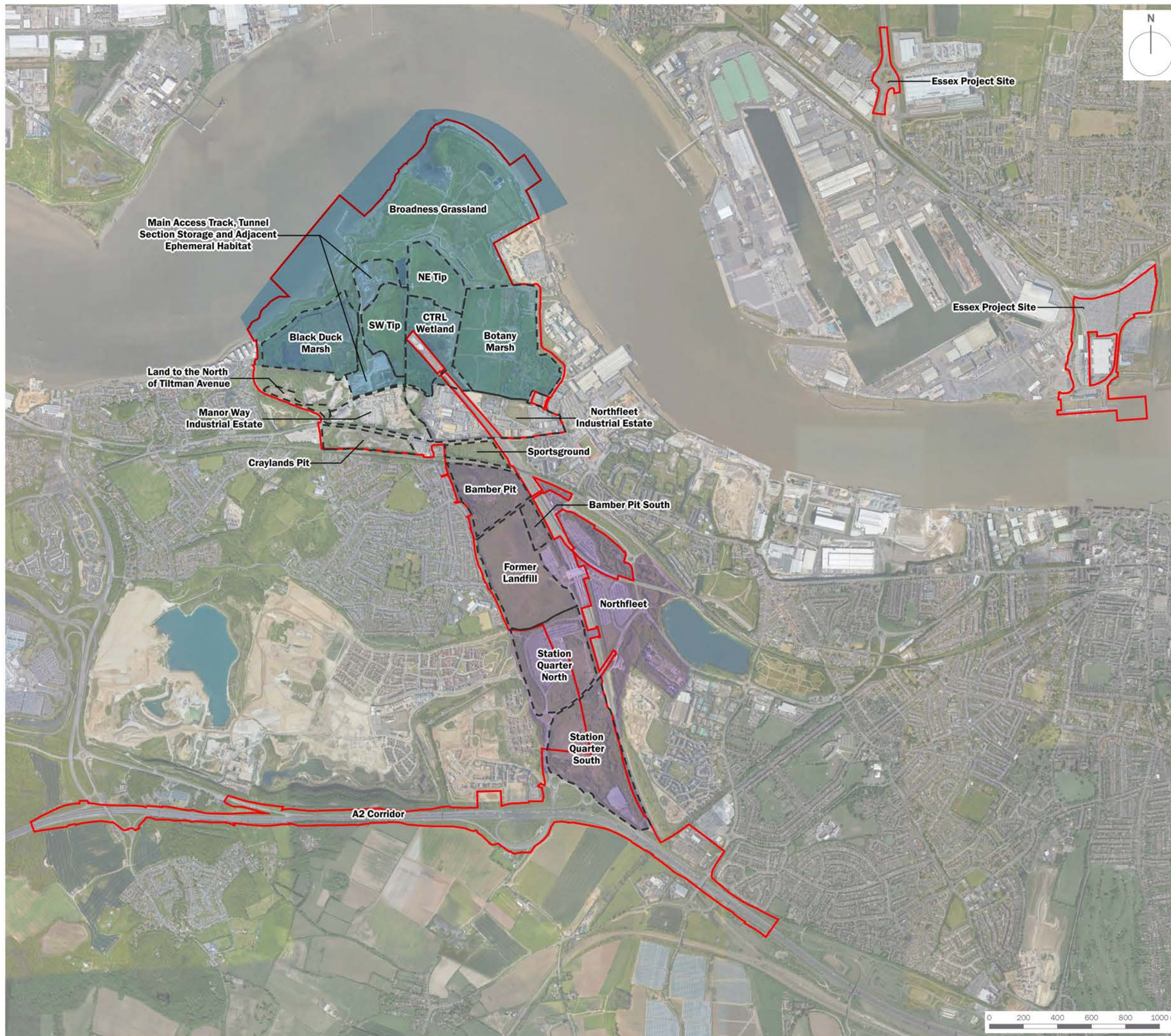
Figure 12.1 Project Site Areas

Document reference: 6.3.12.1
Revision: 00

December 2020

Planning Act 2008
The Infrastructure Planning (Applications: Prescribed Forms and Procedure) Regulations 2009
Regulation 5(2)(a)
The Infrastructure Planning (Environmental Impact Assessment) Regulations 2017
Regulation 12(1)

[This page is intentionally left blank]



client
London Resort Company Holdings Limited

project title
The London Resort

drawing title
Figure 12.1: Project Site Areas

date	17 DECEMBER 2020	drawn by	GY
drawing number	edp5988_d051d	checked	VF
scale	1:20,000 @ A3	QA	JTF



Registered office: 01285 740427 - www.edp-uk.co.uk - info@edp-uk.co.uk